

# LKS2 Science Knowledge Organiser: Plants

## 3 BIG IDEAS

### Curiosity

I can ask and answer questions on plant growth and reproduction  
I can explore the different factors that affect plant growth

### Investigation

I can investigate and identify how water is transported in plants  
I can investigate and identify the role flowers play in the life cycle of plants

### Explanation

I know and can explain how photosynthesis works  
I know and can explain how flowering plants reproduce  
I know and can explain how water is transported in plants

## VOCABULARY

**Photosynthesis** - the process in which green plants use sunlight to make their own food

**Fertiliser** - substances added to the soil or sprayed on the leaves of plants to keep them well

**Potassium** - a metal that is used in fertilising crops

**Xylem** - carries water from the roots to all parts of the tree or plant

**Phloem** - a tissue where substances can flow up and down to carry the food throughout the plant

**Anther** - the part of a stamen that produces and contains pollen and is usually borne on a stalk

**Filament** - the stalk of a plant stamen that bears the anther

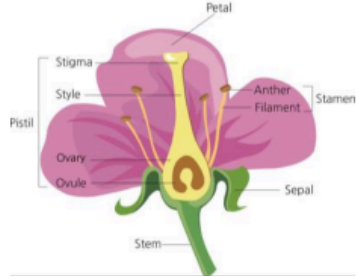
**Stomata** - tiny openings or pores, found mostly on the undersurface of a plant leaf and used for gas exchange

**Transpiration** - the process of water movement in a plant

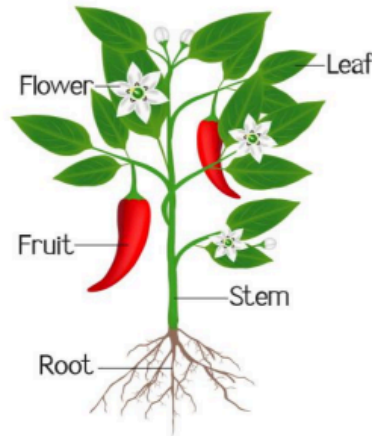
**Pollen** - a fine powder produced by certain plants

**Nectar** - a liquid produced by the flower of plants

### Parts of a Flower



### Parts of a Plant

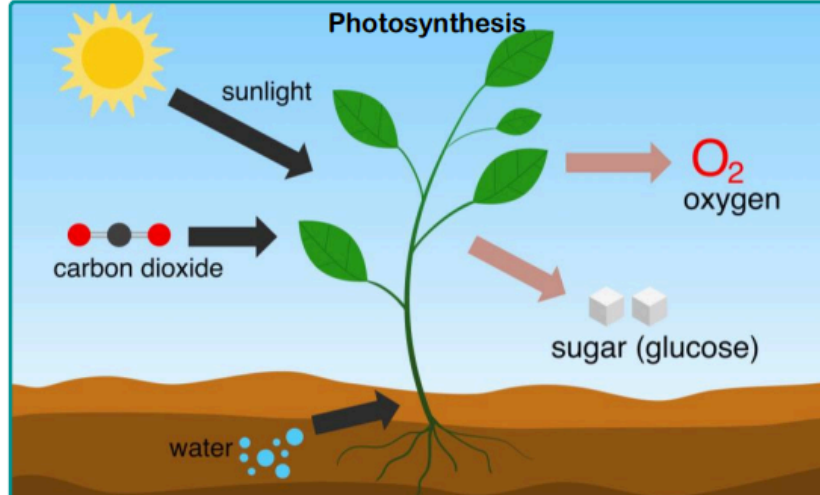


1. The roots of a plant absorb water from the soil.
2. The stem transports water to the leaves.
3. Water evaporates from the leaves.
4. This evaporation causes more water to be sucked up the stem.
5. The fruit is the part of a flowering plant that contains the seeds.

### Seed Dispersal



### Photosynthesis



### Life Cycle of a Plant

